

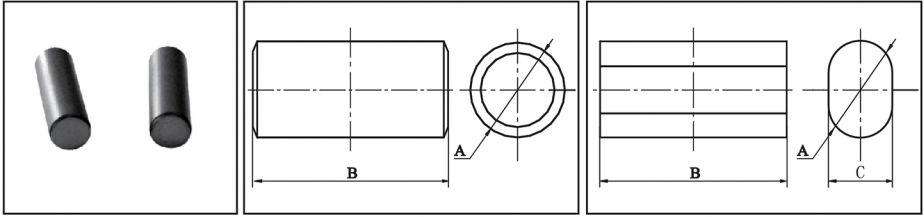
AR CORE

FIG.1

FIG.2

TYPE	FIG.	Dimensions(mm)			Weight
		A	B	C	g/PCS
AR4/15	1	4.0±0.2	15.0±0.4		1.15
AR5/30	2	5.0±0.2	30.0±0.4		2.83
AR5/20.4	1	5.0±0.2	20.4±0.3		1.92
AR5/60	2	5.0±0.3	60.0±0.1	4.6±0.3	5.60
AR6/30	1	6.0±0.2	30.0±0.5		4.00
AR6/20	1	6.0±0.2	20.0±0.5		2.25
AR6.35/25.4	1	6.35±0.25	25.4±0.7		4.20
AR8/25	1	8.0+0.1/-0.2	25.0±0.3		5.80
AR8/31.75	1	8.0±0.35	31.75±0.75		8.30
AR8/38.1	1	8.0±0.35	38.1±0.75		6.20
AR9.5/6	1	9.5±0.2	6.0±0.3		2.00
AR9.5/29	1	9.5±0.2	28.7±0.5		9.51
AR10/20	1	10.0±0.5	20.0±0.5		7.50
AR10/28	1	10.0±0.2	28+0/-1.0		10.20
AR10/30	1	10.0±0.35	30.0±0.6		8.50
AR10/40	1	10.0+0.3/-0.05	40.3+0.3/-0.6		14.60
AR10/45	1	10.0±0.2	45.0±0.5		17.00
AR10/48.5	1	10.0±0.4	48.5±1.0	8.9±0.2	20.10
AR12/40	1	12.0+0/-0.2	40.0±1.0		21.70
AR12.3/41.3	1	12.3±0.4	41.3±0.8		25.50
AR10/50	2	10.0±0.4	50.0±0.1	8.9±0.2	15.00